

User Manual

HD-70XT-EU

4K Wallplate HDBaseT Transmitter



All Rights Reserved

Version: HD-70XT-EU_2020V1.4


Preface

Read this user manual carefully before using the product. Pictures shown in this manual is for reference only. Different models and specifications are subject to real product.

This manual is only for operation instruction only, not for any maintenance usage. Please contact your dealer for maintenance assistance. The functions described in this version are updated till May 2021. In the constant effort to improve our product, we reserve the right to make functions or parameters changes without notice or obligation. Please refer to the dealers for the latest details.

All product function is valid till 2021-5-5.

Trademarks

Product model and logo  are trademarks of U.T.E. electronic GmbH & Co. KG. Any other trademarks mentioned in this manual are acknowledged as the properties of the trademark owner. No part of this publication may be copied or reproduced without the prior written consent.

FCC Statement

This equipment generates, uses and can radiate radio frequency energy and, if not installed and used in accordance with the instructions, may cause harmful interference to radio communications. It has been tested and found to comply with the limits for a Class A digital device, pursuant to part 15 of the FCC Rules. These limits are designed to provide reasonable protection against harmful interference in a commercial installation.

Operation of this equipment in a residential area is likely to cause interference, in which case the user at their own expense will be required to take whatever measures may be necessary to correct the interference.

Any changes or modifications not expressly approved by the manufacture would void the user's authority to operate the equipment.



SAFETY PRECAUTIONS

To insure the best from the product, please read all instructions carefully before using the device. Save this manual for further reference.

- Unpack the equipment carefully and save the original box and packing material for possible future shipment
- Follow basic safety precautions to reduce the risk of fire, electrical shock and injury to persons.
- Do not dismantle the housing or modify the module. It may result in electrical shock or burn.
- Using supplies or parts not meeting the products' specifications may cause damage, deterioration or malfunction.
- Refer all servicing to qualified service personnel.
- To prevent fire or shock hazard, do not expose the unit to rain, moisture or install this product near water.
- Do not put any heavy items on the extension cable in case of extrusion.
- Do not remove the housing of the device as opening or removing housing may expose you to dangerous voltage or other hazards.
- Install the device in a place with fine ventilation to avoid damage caused by overheat.
- Keep the module away from liquids.
- Spillage into the housing may result in fire, electrical shock, or equipment damage. If an object or liquid falls or spills on to the housing, unplug the module immediately.
- Do not twist or pull by force ends of the cable. It can cause malfunction.
- Do not use liquid or aerosol cleaners to clean this unit. Always unplug the power to the device before cleaning.
- Unplug the power cord when left unused for a long period of time.
- Information on disposal for scrapped devices: do not burn or mix with general household waste, please treat them as normal electrical wastes.

Table of Contents

1. Introduction	1
1.1 Introduction to HD-70XT-EU	1
1.2 Feature	1
1.3 Package List	2
2. Panel Description of HD-70XT-EU	3
2.1 Front Panel	3
2.2 Rear Panel	4
2.3 Side Panel	5
3. System Connection	6
3.1 System Overview	6
3.2 System Installation	7
4. Button Control	7
5. RS232 Control	8
5.1 RS232 Connection	8
5.1.1 Control by a local PC	8
5.1.2 Control by a remote PC connected with Receiver	9
5.2 RS232 Control Software	9
5.2.1 Installation/uninstallation of RS232 Control Software	9
5.2.2 Basic Settings	10
5.3 RS232 Command	11
5.3.1 Control Mode Switching	11
5.3.2 Signal Switching	11
5.3.3 VGA Scaling Configuration	11
5.3.4 HDCP Compliance	12
5.3.5 VGA Image Adjustment	12
5.3.6 EDID Configuration	14
5.3.7 Device Configuration	14
6. Panel Drawing	15
7. Specification	16
8. Troubleshooting & Maintenance	17

9. After-sales Service 18

1. Introduction

1.1 Introduction to HD-70XT-EU

HD-70XT-EU is 2x1 4K wallplate HDBaseT Transmitter for switching and extending HDMI or VGA + audio input to display or projector. The transmission distance is up to 40m @4K and 70m @1080p over a single Cat5e/6/7 cable based on Certified HDBaseT technology. The resolution of HDMI input is up to 4K/UHD @60Hz 4:2:0 and VGA input up to 1920x1200.


HD-70XT-EU is ideal for huddle rooms, classrooms and small conference rooms. The wall-mountable design provides the convenience of placing input connections precisely where they are needed.

1.2 Feature

- Features one HDMI input and one VGA input with 3.5mm analogue audio input.
- Supports HDMI signal up to 4K @60Hz 4:2:0, VGA input signal up to 1920x1200.
- Built-in scaling function to match signals to display native resolution.
- Ensures display of content-protected media and interoperability with other HDCP compliant devices.
- Audio signal can be selectively embedded into the video output.
- HDBaseT technology extend HDMI and VGA, Audio, control signals up to 70m over CATx cable.
- Automatically detect active inputs when sources are connected.
- Flexible control options for compatibility with third-party system, matrix switcher or receiver.
- Supports bi-directional RS232 pass-through with HDBaseT connection and local control.
- PoH (power over HDBaseT) allows powering from the receiver (e.g. HD22-70XR) at the display end.
- Provides power supply for devices like TF8 Control Panel.

1.3 Package List

- 1 x HD-70XT-EU 4K Wallplate HDBaseT Transmitter
- 1 x 2-pin Pluggable Terminal Block
- 1 x 4-pin Pluggable Terminal Block
- 1 x User Manual

 **Note:** Please confirm if the product and the accessories are all included, if not, please contact with your dealer. Please contact your dealer immediately if you found any damage or defect in the components.

2. Panel Description of HD-70XT-EU

2.1 Front Panel

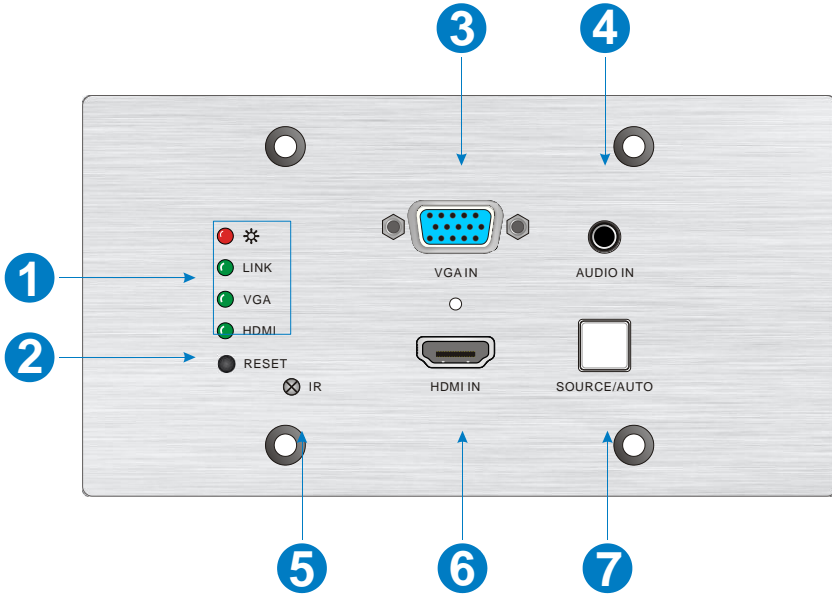


Figure 2-1 HD-70XT-EU Front Panel

No.	Name	Description
①	LED indicator	POWER: Glows red when power is applied.
		LINK: Glows green when an HDBaseT link is established.
		VGA: Glows green when the VGA input is active, amber when a source is available, and off when there is no source connected.
		HDMI: Glows when HDMI input is active, amber when a source is available, and does not light when there is no source connected.
②	RESET	This button performs a soft reboot of the HD-70XT-EU.
③	VGA IN	VGA input connector, connect with VGA source.
④	AUDIO IN	3.5mm stereo audio connector supplies audio for the VGA input.

HD-70XT-EU: 4K Wallplate HDBaseT Transmitter

⑤	IR	Built-in IR sensor to receive IR signal from IR remote.
⑥	HDMI IN	HDMI input connector, connect with HDMI source.
⑦	SOURCE/AUTO	<p>Backlight Button.</p> <ul style="list-style-type: none"> Press this button to switch input signal manually between HDMI and VGA sources. Press and hold this button 3 seconds, the LED turn green to enter auto-switching mode. Press and hold again can exit this mode.

2.2 Rear Panel

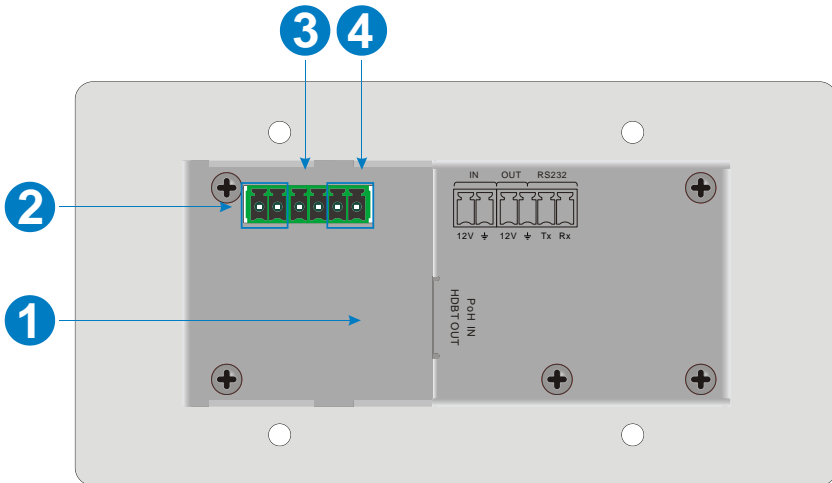


Figure 2-2 HD-70XT-EU Rear Panel

No.	Name	Description
①	HDBT OUT (PoH IN)	HDBaseT output, connects with HDBaseT Receiver (e.g. HD-22-70XR) over a single Category cable to deliver AV signals, support PoH.
②	IN	12V input, connects with power adapter.
③	OUT	12V output, connects with WP8 Control Panel to energize it.
④	RS232	Serial port for control HD-70XT-EU or the third-party device via RS232 commands. Please refer to the <u>5. RS232 Control</u> for more details.

2.3 Side Panel

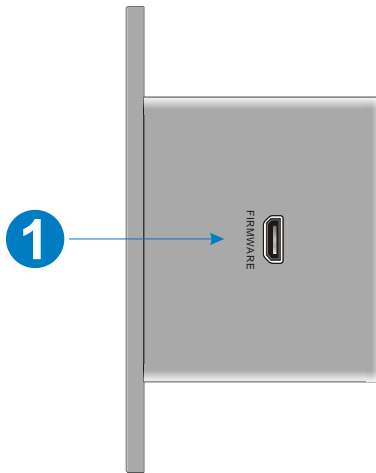


Figure 2-2 HD-70XT-EU Side Panel

No.	Name	Description
①	FIRMWARE	Micro-USB connector used for firmware update.

3. System Connection

Usage Precautions

- Verify all components and accessories included before installation.
- System should be installed in a clean environment with proper temperature and humidity.
- All of the power switches, plugs, sockets and power cords should be insulated and safe.
- All devices should be connected before power on.

3.1 System Overview

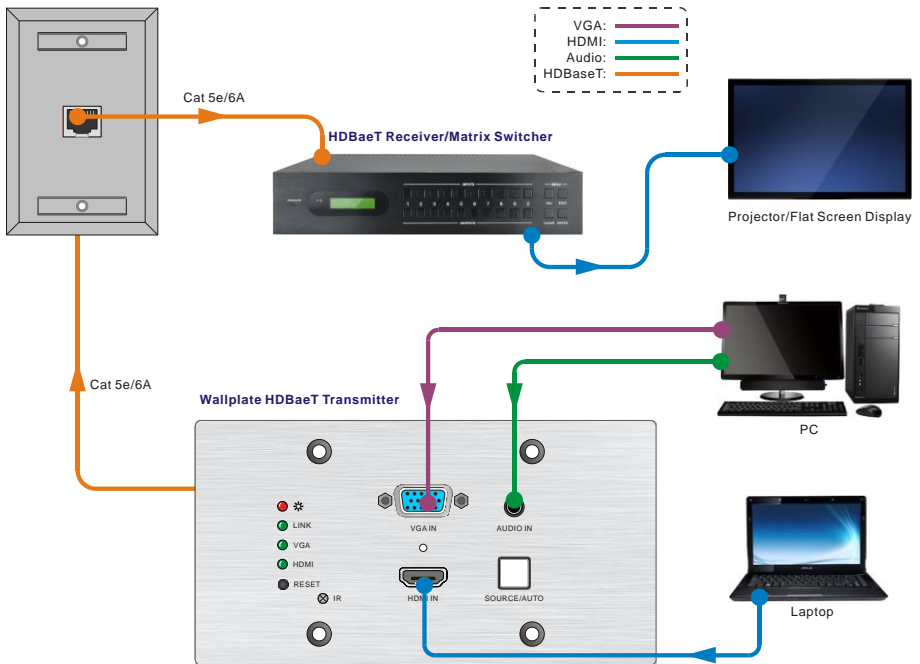



Figure 3-1 Connection and System Diagram

 **Note:** This Picture is for reference only, the specific scheme is subject to real devices.

3.2 System Installation

- ① If installing in a back-box, it is recommended that the HD-70XT-EU be installed in a suitable square box. The square box has sufficient space to terminate the cables with jacks behind the unit when fully installed.
- ② Run one Cat5e/6/7 cable from the HD-70XT-EU location to the location where the HDBaseT Receiver/ Matrix Switcher will be located (somewhere near the display device). See the installation instructions for the HDBaseT Receiver.
- ③ If using the Control Panel, run another twisted pair cable from the HD-70XT-EU location to the location that the Control Panel will be mounted.
- ④ All Cat5e/6/7 cables should be terminated with jacks. This allows the permanent link between the two devices to be tested.
- ⑤ Use the appropriate category rated patch cable to connect the HDBaseT link to the HDBT OUT connector.
- ⑥ If using the Programmable 8 Button Control Panel TF8, use the supplied adapter cable to connect with the second cable and follow the installation instructions for the HDBaseT Receiver and TF8 Control Panel.



Note: We recommends Cat5e/6/7 cabling with alien crosstalk prevention technology for the performance of HDBaseT link.

4. Button Control

SOURCE/AUTO Button

Press and hold the SOURCE/AUTO button for 3 seconds. When the button lights up green the HD-70XT-EU is in AUTO mode.

This mode automatically selects the last video source connected to the HD-70XT-EU and outputs it to the display.

Press and hold again for approximately 3 seconds, the light will go out, and the device will be in Manual mode which will allow the user to momentarily press the button to toggle between the two sources.

5. RS232 Control

5.1 RS232 Connection

There are two RS232 control modes switching via sending 50779% or 50780%.

- Control HD-70XT-EU and far-end third-party device by a local PC
- Control HD-70XT-EU by a remote PC connected with Receiver

The RS232 control mode can be chosen via RS232 commands, please refer to the **5.3.1 Control Mode Switching** for more details.

5.1.1 Control by a local PC

Control this HD-70XT-EU and far-end third-party device (such as Projector) by the local PC, and the connection diagram shown as below:

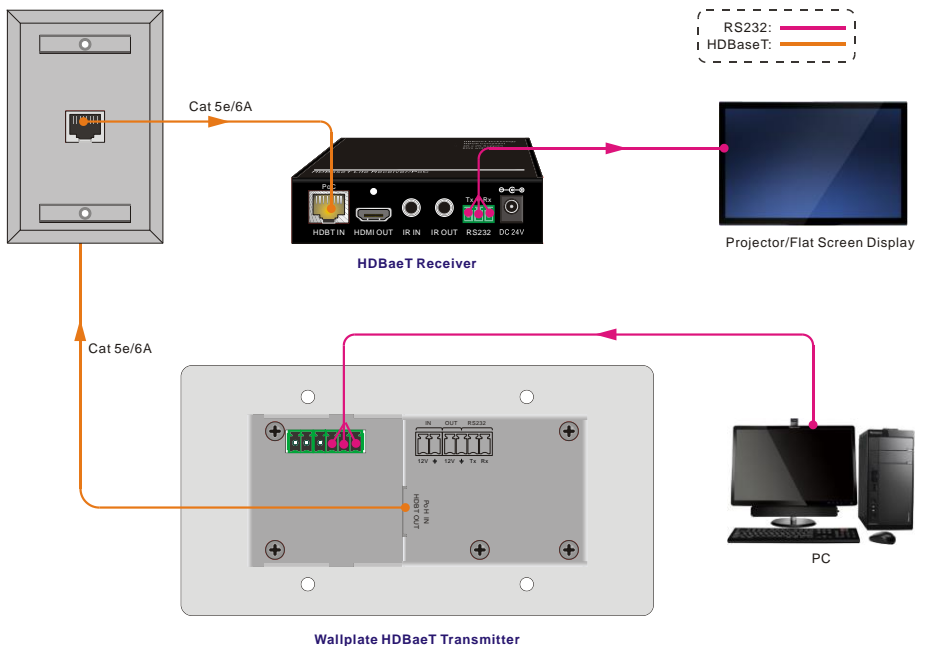


Figure 5-1 Connection diagram for control by a local PC

HD-70XT-EU: 4K Wallplate HDBaseT Transmitter

5.1.2 Control by a remote PC connected with Receiver

Control the HD-70XT-EU by the remote PC which is connected with Receiver shown as below:

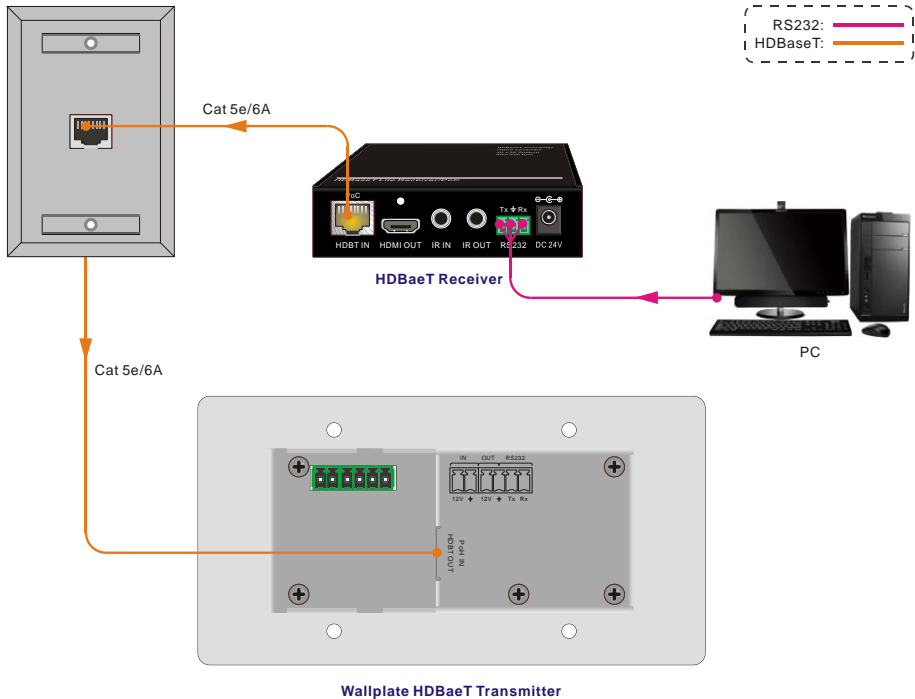


Figure 5-2 Connection diagram for control by remote local PC

Note: The RS232 control mode can be chosen via RS232 commands (50779% or 50780%), please refer to the **5.3.1 Control Mode Switching** for more details.

5.2 RS232 Control Software

5.2.1 Installation/uninstallation of RS232 Control Software

- **Installation** Copy the control software file to the control PC.
- **Uninstallation** Delete all the control software files in corresponding file path.

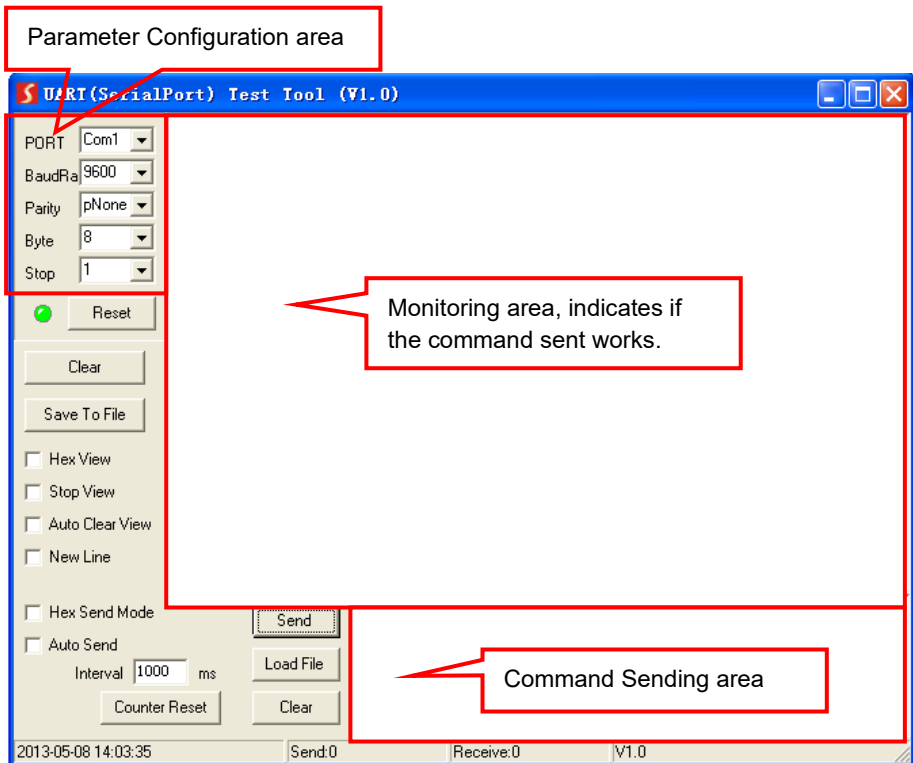
5.2.2 Basic Settings

First, connect HD-70XT-EU with all input devices and output devices needed, then to connect it with a computer which is installed with RS232 control software. Double-click the software icon to run this software.

Here we take the software **CommWatch.exe** as example. The icon is showed as below:



The interface of the control software is showed as below:



Please set the parameters of COM number, bound rate, data bit, stop bit and the parity bit correctly (Baud rate: 9600; Data bit: 8; Stop bit: 1;Parity bit: none), and then you are able to send command in Command Sending Area.

5.3 RS232 Command

Communication protocol: RS232 Communication Protocol

Baud rate: 9600

Data bit: 8

Stop bit: 1

Parity bit: none

5.3.1 Control Mode Switching

Command	Function	Feedback Example
50779%	Switch to RS232 mode 1 (Default) , control scaler switcher and the far-end third-party device.	RS232 Mode 1: RS232 Control Scaler & Remote.
50780%	Switch to RS232 mode 2, control the scaler switcher from remote.	RS232 Mode 2:RS232 & Remote Control Scaler

5.3.2 Signal Switching

Command	Function	Feedback Example
50770%	Enable auto-switching	Auto Switching
50771%	Disable auto-switching	Manual Switching
50701%	Switch to HDMI input	Switch to HDMI
50704%	Switch to VGA input	Switch to VGA

5.3.3 VGA Scaling Configuration

The default output resolution for VGA is 1920x1080.

Below is a list of the output resolutions the built-in scaler can output.

Command	Function	Feedback Example
50632%	Check the output resolution	Resolution: xx
50619%	Change the resolution to 1360X768 HD	Resolution: 1360x768
50626%	Change the resolution to 1024X768 XGA	Resolution: 1024x768
50627%	Change the resolution to 1280X720 720P	Resolution: 1280x720
50628%	Change the resolution to 1280X800 WXGA	Resolution: 1280x800
50629%	Change the resolution to 1920X1080 1080P	Resolution: 1920x1080
50620%	Change the resolution to 1920X1200 WUXGA	Resolution: 1920x1200

Command	Function	Feedback Example
50621%	Change the resolution to 1600X1200 UXGA	Resolution: 1600x1200

5.3.4 HDCP Compliance

Command	Function	Feedback Example
50790%	Set the HDCP status of HDMI output socket to Active	HDCP Active
50791%	Set the HDCP status of HDMI output socket to On	HDCP On
50792%	Set the HDCP status of HDMI output socket to Off	HDCP Off
50793%	Check HDCP status	HDCP Off/ HDCP On/ HDCP Active (default)


5.3.5 VGA Image Adjustment

Command	Function	Feedback Example
50636%	Check the brightness	Brightness: xx (xx=00~99)
502xx%	Set the brightness to xx.	Brightness: xx (xx=00~99)
50637%	Check the contrast	Contrast: xx (xx=00~99)
503xx%	Set the contrast to xx.	Contrast: xx (xx=00~99)
50638%	Check the saturation	Saturation: xx (xx=00~99)
504xx%	Set the saturation to xx.	Saturation: xx (xx=00~99)
50639%	Check sharpness	Sharpness: xx (xx=00~99)
505xx%	Set the sharpness to xx.	Sharpness: xx (xx=00~99)
50606%	Auto-adjust the input parameter	VGA Input Auto
50640%	Check the color temperature	Color Temperature: xx (xx can be medium, warm, user, or cool.)
50607%	Adjust the color temperature	Color Temperature: xx (xx can be medium, warm, user, or cool.)

Command	Function	Feedback Example
50635%	Check the image aspect ratio	Aspect Ratio: xx (xx can be 16:9, 4:3, or auto.)
50608%	Set the aspect ratio	Aspect Ratio: xx (xx can be 16:9, 4:3, or auto.)
50633%	Check the picture mode	Picture Mode: xx (xx can be dynamic, standard, mild, or user.)
50614%	Set the picture mode	Picture Mode: xx (xx can be dynamic, standard, mild, or user.)
50707%	Check the present resolution and polarity	1920x1080 Hpolarity:1 Vpolarity:0
50705%	Change the horizontal polarity to the opposite	Hpolarity:0/1
50706%	Change the vertical polarity to the opposite	Vpolarity:0/1
50678%	Enable screen output adjusting	Enter Output Position Adjust
50679%	Disable screen output adjusting	Exit Output Position Adjust
50670%	Move the image to left	Output Position Adjust X xx
50671%	Move the image to right	Output Position Adjust X xx
50672%	Move the image up	Output Position Adjust Y xx
50673%	Move the image down	Output Position Adjust Y xx
50674%	Pull left from right side (decrease image width)	Output Width Adjust xx
50675%	Stretch right from right side (increase image width)	Output Width Adjust xx
50676%	Stretch upwards from bottom side (decrease image height)	Output Height Adjust xx
50677%	Stretch downwards from bottom side (increase image height)	Output Height Adjust xx

5.3.6 EDID Configuration

Command	Function	Feedback Example
50772%	EDID pass-through (default)	EDID: bypass mode
50773%	Set EDID data to 1080P PCM 2.0ch	EDID:1080P&PCM 2ch
50774%	Set EDID data to 1080P Dolby 5.1	EDID:1080P&5.1ch
50775%	Set EDID data to 1080P3D Dolby 5.1	EDID:1080P3d&5.1ch
50776%	Set EDID data to 1080i PCM 2.0ch	EDID:1080i&PCM 2ch
50777%	Set EDID data to 4Kx2K PCM 2.0ch	EDID:4K&PCM 2ch
50778%	Check EDID data	EDID: bypass mode EDID:1080P&PCM 2ch EDID:1080P&5.1ch EDID:1080P3d&5.1ch EDID:4K&PCM 2ch
50799%	Program EDID file, send EDID data within 10s	Waiting for edid within 10 secs!

 **Note:** EDID commands are for HDMI sources only.

5.3.7 Device Configuration

Command	Function	Feedback Example
50698%	Software upgrading	
50699%	Check the software version	Version Vx.x.x
50617%	Restore factory default	

6. Panel Drawing

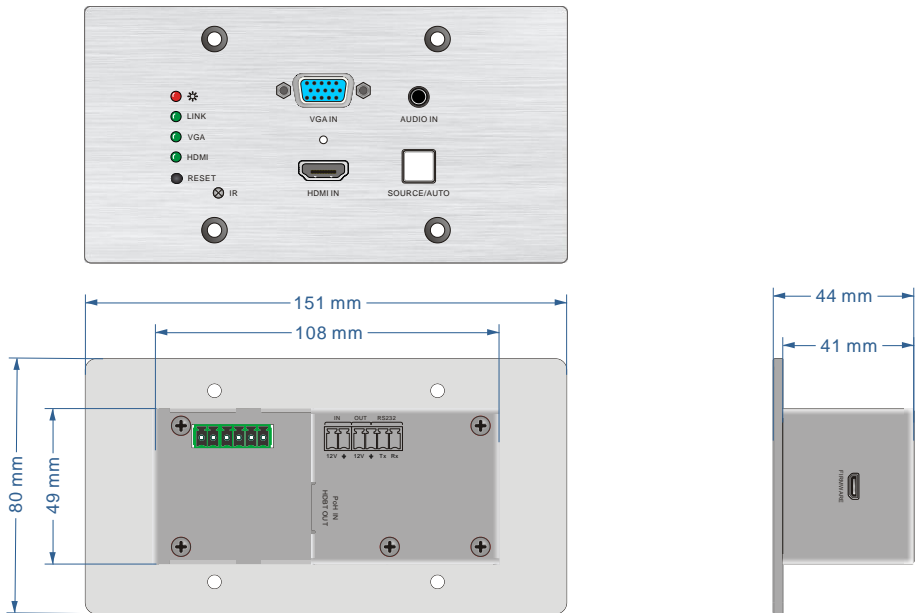


Figure 6-1 HD-70XT-EU Panel Drawing

7. Specification

Input & Output	
Input	1x HDMI 1x VGA 1x AUDIO 1x 12V POWER
Input Connector	1x 19-pin Type A female HDMI 1x HD-15 VGA 1x 3.5mm mini jack 1x 2-pin Pluggable Terminal Block
Output	1x HDBaseT 1x 12V POWER
Output Connector	1x RJ45 1x 2-pin Pluggable Terminal Block
Transmission Mode	HDBaseT
Control Parts	
Control Ports	1x FIRMWARE 1x RS232
Control Connector	1x Micro USB 1x 3-pin Pluggable Terminal Block
General	
Video Resolution	VGA - up to 1920 x 1080@60Hz; HDMI - up to 4K/UHD @60Hz 4:2:0
Audio Impedance	> 10Ω
Frequency Response	20Hz~20KHz
SNR	>85db@20Hz~20KHz
Transmission Distance	1080p ≤ 70M; 4Kx2K ≤ 40M
Bandwidth	10.2Gbps
HDMI Standard	Support HDMI1.4 and HDCP 1.4
External Power Supply	Input:100V~240V AC; Output: 12VDC 2A
Max Consumption	9.6W
Operation Temperature	-10 ~ +40°C
Storage Temperature	-15 ~ +55°C
Relative Humidity	10% ~ 90%
Dimension (W*H*D)	151mm x 80mm x 44mm
Net Weight	258g

8. Troubleshooting & Maintenance

Problems	Potential Causes	Solutions
Color losing or no video signal output in HDMI display	The connecting cables may not be connected correctly or it may be broken	Check whether the cables are connected correctly and in working condition.
No HDMI signal output in the device while local HDMI input is in normal working state		
Output image with white noise.		
POWER indicator doesn't work or no respond to any operation	Loose or failed power cord connection	Ensure the power cord connection is good

If your problem persists after following the above troubleshooting steps, seek further help from authorized dealer or our technical support (info@ute.de).

9. After-sales Service

If there appear some problems when running the 4K Wallplate HDBaseT Transmitter, HD-70XT-EU, please check and deal with the problems referring to this user manual. Any transport costs are borne by the users during the warranty.

The return of a product to our Customer Service implies the full agreement of the terms and conditions hereinafter. These terms and conditions may be changed without prior notice.

1) Product Limited Warranty: We warrants that its products will be free from defects in materials and workmanship for two years, which starts from the first day you buy this product (The purchase invoice shall prevail).

Proof of purchase in the form of a bill of sale or receipted invoice which is evidence that the unit is within the Warranty period must be presented to obtain warranty service.

2) Scope

These terms and conditions of Customer Service apply to the customer service provided for the products or any other items sold by authorized dealer only.

3) What the warranty does not cover (Warranty Exclusion)

- Warranty expiration.
- Factory applied serial number has been altered or removed from the product.
- Damage, deterioration or malfunction caused by:
 - Normal wear and tear.
 - Use of supplies or parts not meeting our specifications.
 - No certificate or invoice as the proof of warranty.
 - The product model showed on the warranty card does not match with the model of the product for repairing or had been altered.
 - Damage caused by force majeure.
 - Servicing not authorized by distributor.
 - Any other causes which does not relate to a product defect.
- Shipping fees, installation or labor charges for installation or setup of the product.

4) Documentation: Customer Service will accept defective product(s) in the scope of warranty coverage at the sole condition that the defeat has been clearly defined, and upon reception of the documents or copy of invoice, indicating the date of purchase, the type of product, the serial number, and the name of dealer.

5) Technical Support: Email to our after-sales department or make a call, please inform us the following information about your cases.

- Product version and name.
- Detailed failure situations.
- The formation of the cases.

Remarks: For any questions or problems, please try to get help from your local dealer or our customer support (info@ute.de).



U.T.E. electronic GmbH & Co. KG

Tel: +49-2302-28283-0

Fax: +49-2302-28283-10

Email: info@ute.de

Website: www.ute.de