

NetReach v1.01

### Muti-device Management

- Easily Discover & Manage WTI Devices on Your Network
- Update Firmware to all or Select Units
- Configure all or Select Units
- Create/Edit Usernames & Passwords
- Backup/Restore Configurations
- View Alarm Status Across all Units
- Group WTI Devices by Location, Function or other Criteria

### Accessibility & Control

- Search all devices on your Out-of-Band Network
- View Available Connectivity Options During an Outage
- Launch Web & SSH Sessions via LAN or 4G LTE Cellular
- Reboot Power on Locked Devices
- Access Console Ports Across Your Network
- Identify Units, Ports, Outlets & Groups
- Export Management Data

### Desktop & Server Requirements

- Windows 10 and above
- Supports Multiple Users
- Shared Database
- Audit Log Records Events and User Activity

## NetReach™

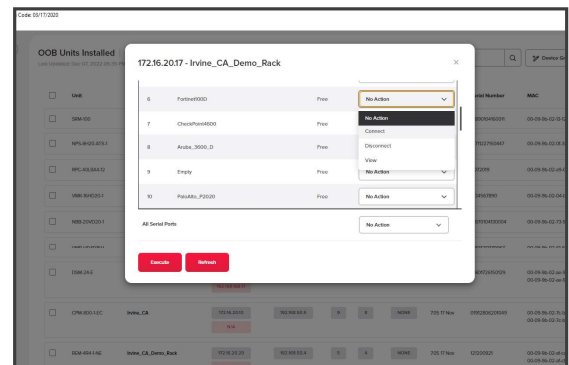
### Centralized Management For WTI Out-of-Band Solutions

NetReach Centralized Management allows network admins to access, control and manage WTI out-of-band network deployments across secure connections via a single, centralized interface. When network connectivity is lost, WTI Out-of-Band connections via primary or secondary Ethernet and 4G LTE are visible and easily accessible.

Updating WTI firmware & configs, changing usernames & passwords, locating & troubleshooting network devices is made easy...even when the network is down!

### Manage With Remote Hands:

- **Update Firmware:** Admins can search and select WTI units from inventory, specify the desired firmware and NetReach will do the rest, updating all selected units on your out-of-band network.
- **Reboot Network Devices:** On/Off/Reboot power to all your network devices connected to WTI PDU's using a single interface.
- **Access Console Ports:** Quickly access console port command functions on your routers, switches, firewalls and other network devices through WTI out-of-band connections.
- **Create/Edit Usernames and Passwords:** Update user account information on multiple WTI units from a single, convenient interface.
- **Search:** Easily search for devices connected to your out-of-band network for quick identification and remediation during failures. Search by IP, unit name, connected device, site ID, serial number, MAC address, asset tag or firmware version.



■ Console Port Access via LTE Cellular